



**RLD**   
*Richard Le Droff*

CATALOGUE 2022

## THE KNOW-HOW

Since 1873, SUPRA FRANCE

## RESEARCH AND DEVELOPMENT

Since progress is invented every day, our Research and Development department is constantly developing our equipment to make it more reliable and more efficient.



**taurus**group

## DESIGNER

### THINK, CREATE, ADAPT

Design is the art of imagining an object that adapts naturally to its user and its environment. It integrates a set of factors such as technology, trends, technical and economic constraints. Like a conductor between worlds, design is at the crossroads of art and science.



## DEVELOP

### THE UNCHANGING REALITY

Research and development is the heart of product development. It is this that brings the first product prototypes to life. True masters of reality, the engineers compete in originality to bring together the idea, the technique and the material.



## MAKE

### GARMENT AND INDUSTRY

Cutting, folding, welding, assembling... eight hours of work and seven people are devoted to the manufacture of a product. A proven industrial manufacturing process, based on know-how, Made In France.







## AFTER SALES

**RLD after sales department are based in France and can be reached from Monday to Friday on a single number: 03 88 95 13 96**

**AFTER SALES DEPARTMENT:** [technique@richardledroff.com](mailto:technique@richardledroff.com)

**SALES ADMINISTRATION :**  
+33 388 951 200 - [advsupra@taurus.eu](mailto:advsupra@taurus.eu)

For other SUPRA FRANCE services: +33 388 951 200

### How to proceed to a return agreement?

RLD units that cannot be processed at an Authorised Service Centre (ASC) must be returned to the factory. Contact our technical service by :

Mail: [technique@richardledroff.com](mailto:technique@richardledroff.com)

Telephone: +33 388 951 393

A request for a return agreement must be completed and must include:

- The company name
- Proof of guarantee
- The purchase invoice
- The model name / item code
- The serial number
- The date of purchase

## SPARE PARTS

Our equipment has been designed and developed according to 3 principles: durability, accessibility and availability

### ACCESSIBILITY

The devices are designed to allow easy and quick intervention, without having to dismantle or replace several parts of the device. We provide the part or parts that need to be replaced. This way, you don't have to change an entire system. In addition, the components of the appliances are removable and easily extractable (e.g. hearth plates, vermiculite, baffles, gaskets, andirons ...).

### SUSTAINABILITY

We use quality materials to ensure that the equipment will last a long time.

Example:

- The castings are supplied painted and have a high thermal resistance.

### AVAILABILITY

We offer a wide range of spare parts such as :

- consumable parts: vermiculite, glass, gaskets, grills, hearth plates, baffles, etc.
- Wear parts: door fasteners, frames, handles, etc.

All spare parts are guaranteed to be original and not reconditioned.

## PELLETS OR WOOD ?

THE CHOICE OF HEAT



## WOOD ... FOR WHOM?

Ideal for families who want to have a supplementary heating system and enjoy the fire.

### BENEFITS

- **Vision of fire**
- **Comfortable warmth**
- **Economical: cheaper energy than electric, gas or oil heating**
- **and equipment grants are available for the installation of a log burning appliance**
- **Renewable energy**
- **Easy to use**

### DISADVANTAGES

- **Maintenance:** wood heating requires regular maintenance and wood supply
- **Storage:** needs to store steres of wood.

## PELLETS ... FOR WHOM?

Ideal for families who want to use the pellet stove as their main heating system, as it is programmable and operates completely independently. Also ideal for families with little storage space and little time to feed their heating system.

### BENEFITS

- **Economical: pellets are the cheapest energy source and there are grants available for the installation of a pellet stove**
- **Excellent efficiency: over 85%.**
- **Autonomy: automatic pellet supply, requires refilling of the tank every 1 to 2 days**
- **Ecological: recycling of wood scraps and very low carbon footprint, less CO2 and dust emissions**
- **Space saving, easy to store: 1 tonne = 1.5 cubic metres**
- **Easy to use: temperature and time can be precisely adjusted**

### DISADVANTAGES

- **Noise:** when the pellet stove is operated with ventilation, the fan may be noisy (can be switched off on some models)
- Dependent on a power outlet: the pellet stove cannot be operated during a power failure
- The weight of a bag of pellets: 15 kgs on average.

# The importance of firewood quality in combustion

It is important to use dry wood in order to obtain an excellent combustion and to get the maximum benefits from your wood stove.

For ecological use, the use of dry wood avoids the emission of particles. The use of wet wood is harmful to the environment and a source of nuisance for neighbours, due to the excessive emission of smoke. The moisture content of the wood (in %) indicates the amount of water contained in the wood being tested. Any wood is considered dry when the moisture content is less than 18%. Thus, 1kg of wood tested at 20% moisture content contains 200g of water. Wood certified by quality labels, such as DIN+ or NF, guarantees the efficiency of the fuel and good heating properties.

### HOW TO CHECK IF YOUR WOOD IS DRY?

**Visual test:** dry wood is free of fungus, is noticeably lighter and may have large cracks.

**Impact test:** Grab two logs and hit one against the other. A duller sound indicates drier wood, a lighter sound indicates dry wood.

**Dishwashing liquid test:** spread a little dishwashing liquid on one end of a log. Blow hard on the other end. If foam appears, the moisture content is ideal.

### Use of a moisture meter

**The size of the logs: a choice that will determine the choice of the product**

In our catalogue, we indicate the (max) log size according to the size of the heating element. The different sizes of wood logs we sell are generally 25 cm, 33 cm and 50 cm. We advise wood stove users to opt for the smaller logs (25 or 33). Even if on some products we indicate that the size of the product allows the use of 50 mm logs, the management of the wood stock will be facilitated.

Smaller logs take up less space than larger logs, because the gaps between the logs are better filled when they are stored. For example, one stère of wood is equivalent to one cubic metre of logs with a dimension of one metre.

However, when cut into smaller sizes, these same logs will occupy less than a cubic metre:

25cm logs: 0.6 m<sup>3</sup>  
33cm logs: 0.7 m<sup>3</sup>  
50cm logs: 0.8 m<sup>3</sup>

In addition, small logs are easier to light and are best for a quick fire. On the other hand, larger diameter logs will be more useful for a longer lasting fire.

### DESIGN AND VISION OF FIRE

The vision of the fire is important. It is through this that the pleasure of having a wood-burning stove is understood. It offers a warmth that is incomparable to other energies and subdues the atmosphere in the living room. The view of the flames can be horizontal or vertical and gives the stove style and design. Are you looking for the spectacle of fire above all? Choose a stove with a large view of the flames. But more than the design, the view of the flames has an impact on the size of the fuel and the way the wood is loaded. In the RLD range, while a large stove with a horizontal view can be loaded with 50 cm logs lying down, a small stove with a vertical view will be loaded with 33 cm logs standing up.

### THE CHOICE OF POWER

A poorly defined stove output leads to thermal discomfort and deterioration of the wood stove. An undersized stove will overfire and cause wear and tear on the appliance. An oversized stove, on the other hand, operates at low speed, resulting in poor combustion and clogged chimney flues. The power of a wood-burning stove should be adjusted according to the size of the room to be heated, the geographical location and the insulation of the house:

The power scale should take into account 3 main criteria:

- Geographical location: If the house is located in a region with harsh winter temperatures, the stove must be more powerful than those installed in regions with a mild climate.
- The insulation of the house: a well insulated house has less heat loss. The heating power required will therefore be lower.
- The volume of the rooms to be heated: The larger the volume of the rooms to be heated, the more powerful the stove must be to heat the room.

**There are approximately :**  
**1 kW to heat 10m<sup>2</sup> - traditional house**  
**1 kW to heat 20m<sup>2</sup> - Well insulated house**

### BENCHMARKS FOR MAKING THE RIGHT CHOICE

To help you choose the right appliance, the following classification allows you to identify the power required for each house\*.

Power (kW)	4	5	6	7	8	9	10	11	12	13	14
Poorly insulated house (m <sup>2</sup> )	32	40	49	57	65	73	81	89	97	105	113
Medium insulated house (m <sup>2</sup> )	53	66	80	93	106	119	133	146	159	172	186
Well insulated house (m <sup>2</sup> )	74	92	111	129	148	166	185	203	222	240	258
Very well insulated house (m <sup>2</sup> )	81	101	121	141	161	181	202	222	242	262	282

\* Ceiling height of 2.50m and geographical area H1

# THE PERFORMANCE

The efficiency of a stove is the ratio between the energy that is produced by the stove and the energy that is consumed. Thus, the higher the efficiency of the stove, the lower the fuel consumption.

The LABEL FLAMME VERTE certifies wood-burning appliances and guarantees environmentally friendly appliances with very low emissions of fine particles.

All appliances have a label that determines the environmental performance class by assigning a number of stars. The number of stars awarded is based on the following criteria (energy efficiency (70% minimum), fine particle emissions and carbon monoxide emissions. In addition, the efficiency of a logburning stove is highest if the wood used is dry, i.e. if its moisture content does not exceed 18%.

**«In fact, for the stove to perform optimally, a minimum temperature must be maintained in the fireplace, a dedicated fresh air supply must be provided to ensure combustion and the wood used must be well dried.**

# VERMICULITE

Vermiculite is a natural mineral used in our wood stoves for its insulation, resistance, aesthetics and weight.  
-Heat resistance up to 1200°C  
-Rapid rise of the combustion chamber  
-Maintaining temperatures in the fireplace  
-Allows for yields of more than 80% to be achieved  
-Has strong insulating properties  
-Modern look  
-A natural and ecological material

### THE DOUBLE-BURNING STOVE

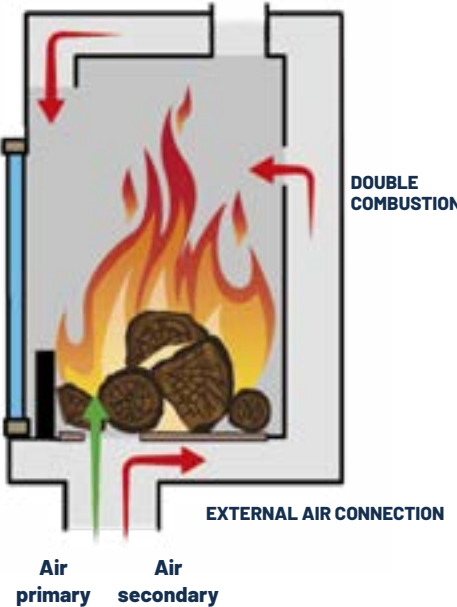
A double-burning stove works in two stages:

In the first instance, logs or pellets are burned. In a second step, the gases and particles emitted by the first combustion are burned.

In contrast to conventional combustion, which does not exploit the full energy potential of the fuel, double combustion or postcombustion increases the performance of stoves by using the energy in the flue gases. This system can only work if the appliances are designed specifically for it.

For example, RLD stoves are equipped with a second air supply that ensures the oxygen supply necessary for the combustion of the gases.

Double combustion increases energy production and limits pollution.





## STEEL WOOD STOVES

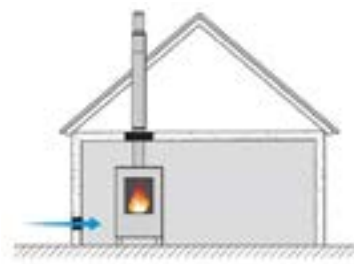
Steel is a combination of iron and aluminium and is suitable for all types of heating. Lightweight, steel wood-burning stoves provide optimum heat distribution from the moment the appliance is switched on. With wear plates made of cast iron, brick or vermiculite, our steel stoves have a long service life and very high performance.

## AIRTIGHT AND NON AIRTIGHT

It is important to choose the wood stove according to the type of house.

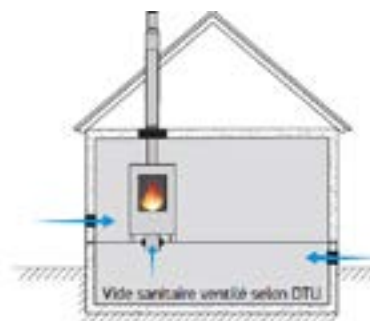
An airtight wood stove is characterised by

- **A high level of airtightness (airtight stove)**
- **A reasoned power**
- **A possibility of connection to the outside air**



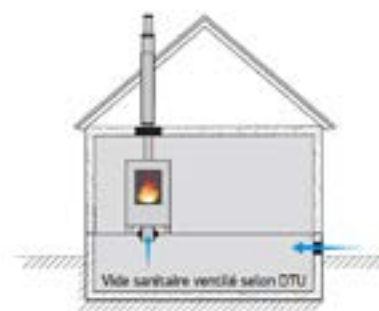
**A classic non-air light appliance**

A conventional appliance takes the combustion air from the room. The room **MUST** have a fresh air inlet. For more comfort, place the unit near the air inlet to warm the incoming air immediately.



**Connectable devices**

A connectable unit takes most of the combustion air from outside the building. The rest comes from the room. A duct brings the outside air directly to the stove. The fresh air intake is a **MUST**. The comfort is better because most of the air consumed comes from the outside



**Air tight and connectable appliances**

A sealed, connectable appliance takes all the combustion air from outside the building. This configuration is mandatory.



## THE INSTALLATION OF A PELLET WOOD STOVE

**Flue gas outlet in zone 1:** The flue gas outlet must be 40 cm above the roof ridge. In this zone, all vertical terminals of airtight and non airtight appliances can be installed.

**Flue gas outlet in zone 2:** the flue gas outlet opens onto the roof but does not extend above the ridge. In this zone, only vertical flues of airtight appliances under DTA may be installed.

**Flue gas outlet in zone 3:** the flue pipe is installed on the facade. This applies to airtight pellet stoves and concentric flues only. In this zone, only horizontal terminals of sealed appliances under DTA can be installed.



### REAR OR TOP AIR CONNECTION

Some stoves are connected to the stovepipe at the top of the appliance, others at the back.

A wood stove with a top outlet has a major advantage: it can be installed closer to your wall. The NF DTU 24.1 standard specifies that the distance to be respected between the wall and the stove must be 3 times the diameter of your flue, with a minimum of 37.5 cm.

**Rear installation distance :**  
**Flue gas nozzle diameter (150 mm): 45 cm**

### AIRTIGHT :

A pellet stove is said to be airtight when it operates independently of the room air, i.e. it takes the combustion air directly from outside the house.

Some pellet stoves are also CSTB certified.

This is a technical notice allowing installation on a concentric duct (Zone 2 and 3), which avoids drilling for an external air supply. The air is pre-heated when it comes into contact with the casing, which improves efficiency (+3 to 5%).

Note: a waterproof or waterproof and CSTB pellet stove can also be installed in a renovation.

### NON AIRTIGHT :

A pellet stove is said to be leaky when it is dependent on the ambient air. A leaky stove can only be connected in ZONE 1 and in renovation.

Note: well insulated house pellet stove cannot be installed in new RT 2012 (RE 2020) houses.

The safe installation of a pellet stove must also take into account the type of floor on which it is placed.

If the load-bearing capacity of the floor is too low to support the weight of the stove (more than 100 kg), then a load distribution plate must be installed.

If the stove is to be placed on a wooden floor, it is necessary to install a floor plate made of non-combustible material (as opposed to wood). Floor plates are made of steel, glass or marble, for example.



# HOW A PELLET STOVE WORKS?

Pellet stoves are designed to heat quickly and efficiently with a renewable energy source, wood pellets. These are small cylindrical sticks made from sawmill residues, such as sawdust and shavings, without glue or additives.

This fuel, once loaded into the stove, is transported to the combustion chamber by a screw system, which controls the speed and quantity of the fuel according to the desired heating power. The fire is lit by an electric heater and a fan provides the right amount of oxygen for combustion. The heat is released by natural convection or by another fan.

## THE DIFFERENT TYPES OF PELLET STOVES

### Natural convection

In natural convection, the heat is released into the room through the stove's air outlets, without any assistance. The advantage of these appliances is that they are silent, as they do not have a fan. However, they should be placed in the centre of the house for proper heat distribution.

### Forced convection

In forced convection, a fan blows warm air into the room. Several power levels are usually available, which limits noise pollution. The fan allows the heat to be spread throughout the room, even if the appliance is in a corner. In addition, the room heats up faster than with natural convection.

### Ductable pellet stoves

Ductable pellet stoves can be used to heat several rooms in the house. As the name suggests, they are connected to ducts in which the air is blown to the most away from the stove, and even on another floor.

## THE CAPACITY OF THE TANK

The autonomy of the pellet stove depends on the tank capacity. Therefore, we recommend pellet stoves with a tank capacity of more than 15kg (corresponding to a bag of pellets), which will last for one day of heating.

## THE COST OF ENERGY

In our pellet stove range SYBELLE or CASTILLON, the consumption of pellet stoves varies from 0.63 - 1.83 kg per hour (depending on the house to be heated, the set temperature and the reduced or nominal output used). With 8 hours of heating per day, the consumption is almost one 15 kg bag per day, i.e. about 2 tons of pellets for 4 months of use.

The price of pellets varies, depending on the distributor, from 0.27 €/kg to 0.4 €/kg\*. Thus, we estimate the cost of purchasing pellets to be between €500 and €700 per year.

\* Prices generally observed in



## THE CHOICE OF POWER

TYPE OF HOUSING	POWER
Low energy housing (BBC)	0,024 kW/m <sup>3</sup> ou 60W/m <sup>2</sup> Soit un poêle de 6 kW /100 m <sup>2</sup>
RT 2005 housing (built between 1 September 2006 and 31 December 2012)	0,04 kW/m <sup>3</sup> ou 100W/m <sup>2</sup> Soit un poêle de 10 kW /100 m <sup>2</sup>
Renovated and properly insulated old house	0,04 kW/m <sup>3</sup> ou 100W/m <sup>2</sup> Soit un poêle de 10 kW / 100 m <sup>2</sup>
Uninsulated	The requirements will depend on the energy balance of the house.

## THE CHOICE OF GRANULES

Like many other products, there are several certifications for wood pellets. Among these, the DINplus certification is one of the most demanded in Europe. DINplus certified pellets are monitored throughout the manufacturing process to ensure an optimal product with a high level of performance.

This certification also includes the origin of the wood and therefore the forest from which it comes.

### Selection criteria :

- **The level of fines** should be less than 1%. Higher levels of fines will cause the pellets to burn more quickly and may clog your heating system.
- **The density of the product** is also an important consideration. The higher the density, the higher the fine rate.
- **The humidity level** prevents the product from burning properly. Ideally, this should be between 8 and 10%.
- **The ash content**, which will facilitate the maintenance of your heater. Ideally less than 0.7%.
- **Mechanical durability**, which prevents the pellet from breaking during transport or delivery to the combustion chamber. Must be higher than 95%.
- **The presence of additives** which are not necessary for their manufacture and which increase the ash content and greenhouse gas emissions.

## CLASSE DE PERFORMANCE ENVIRONNEMENTALE



Le label du chauffage au bois

[www.flammeverte.org](http://www.flammeverte.org)

Appareil de classe **7★**

Cet appareil doit être installé par un professionnel selon les règles de l'art et conformément aux règles techniques rappelées dans la notice.  
Une bonne utilisation de cet appareil alimenté au bois contribue à économiser l'énergie, à réduire les émissions de gaz à effet de serre et à préserver notre environnement.

Avec le concours de l'ADEME

## THE LABELS

**FLAMME VERTE** : The quality label

The Flamme Verte label was launched in 2000 by the ADEME (Agency for Ecological Transition). It labels and concerns wood-burning appliances (inserts, stoves, boilers, etc.). This label guarantees that the appliances are environmentally friendly, and that their fine particle emissions are very low. An energy label on appliances determines their environmental performance class by giving them a number of stars. The higher the number of stars (the maximum being 7), the better the performance of the appliance. Since 1 January 2021, only appliances with 7 stars can obtain the Green Flame label.

The number of stars awarded is based on the following criteria:

- **Energy efficiency: 75% minimum for log stoves and 87% for pellet stoves**
- **The rate of fine particle emissions.**
- **The amount of nitrogen oxide released into the atmosphere.**

If these three criteria are met, the appliance is both efficient and environmentally friendly.



# The European ECODESIGN Regulation

aims to support the design of energy and resource efficient products. The aim is to promote ecodesign in energy-related appliances such as heating equipment. This standard is to be applied in all EU countries and in the countries of the European Economic Area.

The Ecodesign 2022 standard provides new information for individuals:

- **Increased safety:** some obsolete technologies can no longer be used (open fires).
- **Energy savings:** heating equipment should be more energy efficient (more fuel efficient).
- **Positive ecological impact:** the appliances are less polluting

ENERGY CLASS

From 1 January 2018, a European directive has made the energy label on wood-burning stoves and closed fireplaces mandatory. The principle is the same as for household appliances, namely to indicate the energy efficiency of products. Ranging from class A++ to class G.

The label contains the following information:



- The name or brand of the supplier
- The model identifier of the supplier
- The energy efficiency class of the appliance (from G to A++)
- The nominal power, expressed in kW.

TECHNOLOGIES DEVELOPED BY RLD

TOTAL CONTROL

PRINCIPLE

Combustion is controlled by two controls that allow separate management of the grate air (primary air), post-combustion air (secondary air) and window air.

EASE OF USE

An ignition control:  
Symbolised by a match: when drawn, it allows maximum supply of combustion air for ignition.

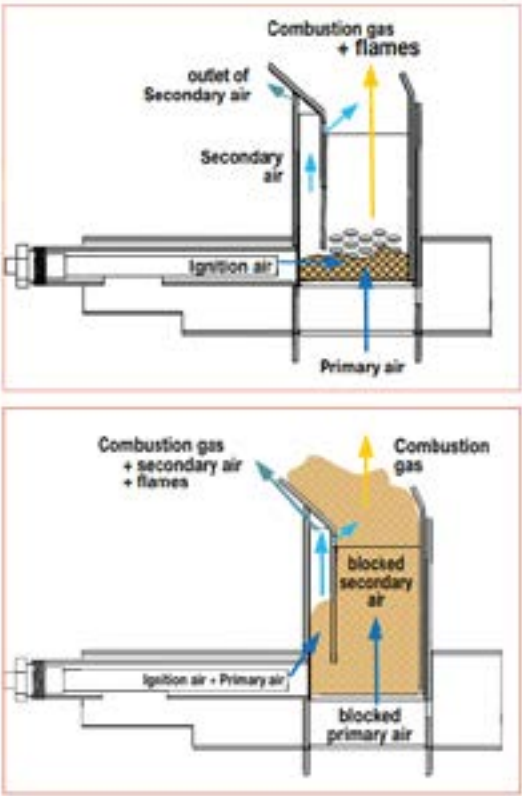
A speed control :  
When the fire is lit, I push back the ignition control and use the adjustment control to control the combustion rate: postcombustion air (secondary air) and window air are used.

ECONOMIC

The vacuum in the duct increases as the temperature of the flue gases rises, so that the heat is dissipated more quickly into the duct and not into the room.

In 50% of cases the natural depression is too great. The TOTAL CONTROL prevents the fire from getting out of control and losing energy.

- Insulation
- Withstands extreme temperature conditions
- Improves combustion
- Reduction of CO2 and fine-particle emissions
- Insensitive to weather conditions
- Controlling the pace of the fire
- Insensitivity to overdrawing without special work on the pipe
- Good ember retention
- Ideal for new well insulated house
- Compatible with the house's VMC



Registered and patented technology

AGS

The AGS technology is a burner specially developed for airtight stoves, ensuring a safe ignition whatever the atmospheric conditions, the installation conditions and the use. The system is designed to be simple, operating without electricity, based on the compartmentalisation of the burner, delimiting an ignition zone with specific and independent air supply.

Clean glass system

Slows down the soiling of the glass. Developed by RLD, the "clean glass" system is based on the circulation of air along the glass-ceramic pane (resistant to over 800°C). The door frame channels a layer of air along the glass pane, which repels the smoke. The glass stays clean longer. This air also brings extra oxygen into the flames and promotes clean combustion.

INDEX

AIRTIGHT FIREPLACES

HONORÉ 600 PAG. 16-17	HONORÉ 700 PAG. 16-17	HONORÉ 800 PAG. 18-19	HONORE 800 HORIZON PAG. 18-19	HONORÉ 1000 PAG. 20-21

NON AIRTIGHT FIREPLACES

CLOVIS 800 PAG. 22-23	VALAIS 650T PAG. 24-25

AIRTIGHT WOOD STOVES

A collection of black wood-burning stoves and fireplaces, categorized by power output (6 kW, 8 kW, 9 kW, 11 kW). Each category shows different models with their respective page numbers. The stoves vary in design, including freestanding, wall-mounted, and tall narrow models.

<b>6 kW</b> <b>ISERE</b> PAG. 32-33	<b>8 kW</b> <b>BELLEVILLE 700C</b> PAG. 26-27	<b>BELLEVILLE 700CL</b> PAG. 26-27	<b>LE MARAIS MURAL 700</b> PAG. 30-31
<b>9 kW</b> <b>MONTMARTRE 800C</b> PAG. 28-29	<b>MONTMARTRE 800P</b> PAG. 28-29	<b>SAINT GERMAIN MURAL</b> PAG. 30-31	<b>MARGUERITE</b> PAG. 34-35
<b>11 kW</b> <b>MONTMARTRE 1000C</b> PAG. 28-29			

AIRTIGHT PELLET STOVES

8 kW SYBELLE 8kW BLANC / NOIR PAG. 36-37	CASTILLON 8kW BLANC / NOIR PAG. 38-39



ESTHETICS

- Screen-printed glass door
- Standard frame for a perfect finish
- Protective fairing as standard

MATERIALS

- Thick steel heating element
- Cast iron hearth plate with secondary air ramp
- Cast iron griddle (3 pieces)

COMBUSTION

- The latest generation of heating elements for more efficient and cleaner combustion (minimum CO and dust content) thanks to essential factors:
  - its airtightness for perfect control of combustion air (primary air, secondary air and window air fully ducted and adjustable)
  - its 2 steel and stainless steel deflectors lined with vermiculite (removable without tools)
  - its secondary air manifold for efficient dual combustion
- Natural heat transfer to the front of the unit for optimum comfort.

USE

- Unique air control for perfect combustion control
- Easily accessible ashtray
- Side opening door
- Convection air can be directed into the air distribution or into the room (installation, fireplace only)
- Turbine: 2 fan speeds (180m3/h) - (option)
- Clean glass system

INSTALLATION

- Compatible for well insulated room
- Airtight and connectable heating element
  - Primary, secondary and window air ducted
  - Fully enclosed for maximum comfort and safety

OPTIONS

- Turbine: 2 fan speeds (180m3/h)
- Air distribution:
  - 2 nozzles Ø125mm (Honoré 600)
  - 4 nozzles Ø125mm (Honoré 700)
  - 2 nozzles Ø150mm (Honoré 700)
- Legs
- Beam protection kit

PRODUCT INFORMATION		
Model	HONORÉ 600	HONORÉ 700
Standard log size	33 (43 max.)	50 (55 max.)
Warranty*	5 years	
Dimensions W x H x D (cm)	59 x 55,5 x 40,5	71 x 59,5 x 48
Gross weight	99 Kg	122 Kg
Net weight	88 Kg	99 Kg
PRODUCT PERFORMANCE		
Power rating	6 kW	8 kW
Power range	3 a 10 kW	5 a 14 kW
Performance	75%	85%
CO emission (13% O2)	0,09%	
Double combustion	Yes	
Ecodesign	Yes	
Green Flame	7 estrellas	
Well insulated house	Yes	

\* 2 years on parts and 5 years on the heating element

IINSTALLATION AND SIZING		
Model	HONORÉ 600	HONORÉ 700
Ø of flue outlet nozzle	150 mm	
Flue gas connection	Top	
Flue gas nozzle	Male	
Ø of combustion air inlet nozzle	75 mm (bottom and rear connection)	
Average flue gas temperature	220°C	174°C
Flue gas mass flow rate	4,7 g/s	6,8 g/s
Nozzle depression for sizing	12 Pa	
CO² emission	11,6%	9,1%
Rear installation distance	5 cm	
Lateral installation distance	5 cm	



HONORÉ 600  
FR9011090B  
EAN: 3760075412081



HONORÉ 700  
FR9011100B  
EAN: 3760075412098



DISTRIBUTION D'AIR PRÉDÉCOUPÉ





ESTHETICS

- Screen-printed glass door
- Standard frame for a perfect finish
- Protective fairing as standard

MATERIALS

- Thick steel heating element
- Cast iron hearth plate with secondary air ramp
- Cast iron griddle (3 pieces)



Richard LeDroff

COMBUSTION

- The latest generation of heating elements for more efficient and cleaner combustion (minimum CO and dust content) thanks to essential factors:
  - its airtightness for perfect control of combustion air (primary air, secondary air and window air fully ducted and adjustable)
  - its 2 steel and stainless steel deflectors lined with vermiculite (removable without tools)
  - its secondary air manifold for efficient dual combustion
- Natural heat transfer to the front of the unit for optimum comfort.

USE

- Unique air control for perfect combustion control
- Easily accessible ashtray
- Side opening door
- Convection air can be directed into the air distribution or into the room (installation, fireplace only)
- Turbine: 2 fan speeds (180m3/h) - (option)
- Clean glass system

INSTALLATION

- Compatible for well insulated room
- Airtight and connectable
  - Primary, secondary and window air ducted
  - Fully enclosed for maximum comfort and safety

OPTIONS

- Turbine: 2 fan speeds (180m3/h)
- Air distributor :
  - 4 nozzles Ø125mm
  - 2 nozzles Ø150mm
- Legs
- Beam protection kit

PRODUCT INFORMATION		
Model	HONORÉ 800	HONORÉ 800 H.
Standard log size	50 (60 max.)	
Warranty*	5 years	
Dimensions W x H x D ( cm)	80 x 70 x 48	80 x 59,5 x 48
Gross weight	147 Kg	136 Kg
Net weight	121,5 Kg	110,5 Kg
PRODUCT PERFORMANCE		
Power rating	10,6 kW	10 kW
Power range	7 a 14 kW	
Performance	76,7%	78%
CO emission (13% O2)	0,09%	
Double combustion	Yes	
Ecodesign	Yes	
Green Flame	7 stars	
Well insulated house	Yes	

\* 2 years on parts and 5 years on the heating element

INSTALLATION AND SIZING		
Model	HONORÉ 800	HONORÉ 800 H.
Ø of flue outlet nozzle	150 mm	
Flue gas connection	Top	
Flue gas nozzle	Male	
Ø of combustion air inlet nozzle	75 mm (bottom and rear connection)	
Average flue gas temperature	326 °C	
Flue gas mass flow rate	8,75 g/s	8 g/s
Nozzle pressure for sizing	12 Pa	
CO² emission	10,43%	11%
Rear installation distance	5 cm	
Lateral installation distance	5 cm	



HONORÉ 800  
FR9011110B  
EAN: 3760075412104



HONORE 800 HORIZON  
FR9011120B  
EAN: 3760075412111



ESTHETICS

- **Screen-printed glass door**
- Standard frame for a perfect finish
- Panoramic view of the fire for large format enjoyment
- **Optional protective fairing**

MATERIALS

- Thick steel heating element
- Reinforced interior, vermiculite + steel (high durability)
- Cast iron grill (3 pieces)



COMBUSTION

- The latest generation of heating elements for more efficient and cleaner combustion (minimum CO and dust content) thanks to essential factors:
  - its airtightness for perfect control of combustion air (primary air, secondary air and window air fully ducted and adjustable)
  - its 2 steel and stainless steel deflectors lined with vermiculite (removable without tools)
  - its secondary air manifold for efficient dual combustion
- Natural heat transfer to the front of the unit for optimum comfort

USE

- Unique air control for perfect combustion control
- Easily accessible ashtray
- Side opening door
- Convection air can be directed into the air distribution or into the room (installation, fireplace only)
- Turbine: 2 fan speeds (240 m3/h) – (option)
- Clean glass system

INSTALLATION

- Compatible for well insulated
- Airtight and connectable heating element
  - Primary, secondary and window air ducted

OPTIONS

- Turbine 240 m³/h to be mounted with 1000 casing and PS100 base
- Protective fairing
- Air distributor:
  - 4 nozzles Ø125mm
  - 2 nozzles Ø150mm
- Legs
- Beam protection kit

PRODUCT INFORMATION	
Standard log size	50 (80 max.)
Warranty* (if applicable)	5 ans
Dimensions W x H x D ( cm)	104 x 59,5 x 48
Gross weight	190 Kg
Net weight	160 Kg
PRODUCT PERFORMANCE	
Power rating	10 kW
Power range	7 a 14 kW
Performance	77%
CO emission (13% O2)	0,098%
Double combustion	Oui
Ecodesign	Oui
Green Flame	7 étoiles
Well insulated house	Oui

\* 2 years on parts and 5 years on the heating element

INSTALLATION AND SIZING	
Ø of flue outlet nozzle	180 mm
Flue gas connection	Dessus
Flue gas nozzle	Mâle
Ø of combustion air inlet nozzle	75 mm (raccordement dessous et arrière)
Average flue gas temperature	256 °C
Flue gas mass flow rate	8,9 g/s
Nozzle pressure for sizing	12 Pa
CO² emission	8,2%
Rear installation distance	5 cm
Lateral installation distance	5 cm



HONORÉ 1000

FR9011150B

EAN: 3760075412142





PRODUCT INFORMATION		INSTALLATION AND SIZING	
Standard log size	50 (60 max.)	Ø of flue outlet nozzle	200 mm
Warranty*	5 ans	Flue gas connection	Dessus
Dimensions W x H x D ( cm)	76 x 61,5 x 48	Flue gas nozzle	Mâle
Gross weight	142 Kg	Average flue gas temperature	405 °C
Net weight	110 Kg	Flue gas mass flow rate	9 g/s
PRODUCT PERFORMANCE		Nozzle pressure for sizing	12 Pa
Power rating	9,5 Kw	CO² emission	9,61%
Power range	7 a 14 kW	Rear installation distance	4 cm
Performance	75%	Lateral installation distance	30 cm
Double combustion	Oui		
Ecodesign	Oui		
Green Flame	7 étoiles		

\* 2 years on parts and 5 years on the heating element

ESTHETICS

- Cast iron door for a classic look
- Reversible hearth plate
  - Protective fairing as standard

MATERIALS

- Thick steel heating element
- Cast iron hearth plate
- Cast iron griddle (3 pieces)

COMBUSTION

- High-performance heating element.
- Stainless steel deflector
- Natural heat transfer to the front of the unit for optimum comfort

USE

- Unique air control for perfect combustion control
- Easily accessible ashtray
- Side opening door
- Convection air can be directed into the air distribution or into the room (installation, fireplace only)
- Turbine: 2 fan speeds (180m³/h) - (option)
- Clean glass system

INSTALLATION

- Fully enclosed for maximum comfort and safety

OPTIONS

- Turbine
- 180m³/h
- Air distributor:
  - 4 nozzles Ø125mm
  - 2 nozzles Ø150mm
- Legs
- Beam protection kit



CLOVIS 800  
FR9011170B  
EAN: 3760075412166



Richard Le Druff





PRODUCT INFORMATION	
Standard log size	45 (50 max.)
Warranty* (if applicable)	5 años
Dimensions W x H x D ( cm)	65 x 53 x 41,5
Gross weight	97 Kg
Net weight	78 Kg
PRODUCT PERFORMANCE	
Power rating	6 Kw
Power range	3 a 10 kW
Performance	78%
CO emission (13% O2)	0,1%
Double combustion	Oui
Ecodesign	Oui
Green Flame	7 étoiles

\* 2 years on parts and 5 years on the heating element

INSTALLATION AND SIZING	
Ø of flue outlet nozzle	-
Flue gas connection	-
Flue gas nozzle	-
Average flue gas temperature	242 °C
Flue gas mass flow rate	7,5 g/s
Nozzle pressure for sizing	12 Pa
CO² emission	7,16%
Rear installation distance	0 cm
Lateral installation distance	0 cm

ESTHETICS

• Cast iron door for a classic look MATERIALS

- Steel heating element
- Cast iron hearth plate
- Cast iron grill

COMBUSTION

- High-performance heating element.
- 2 turbines fitted as standard to distribute the heat in the room

USE

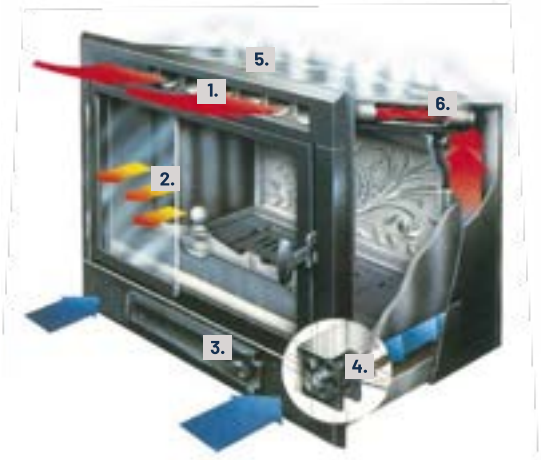
- Unique air control for perfect combustion control
- Easily accessible ashtray
- Side opening door
- Clean glass system

INSTALLATION

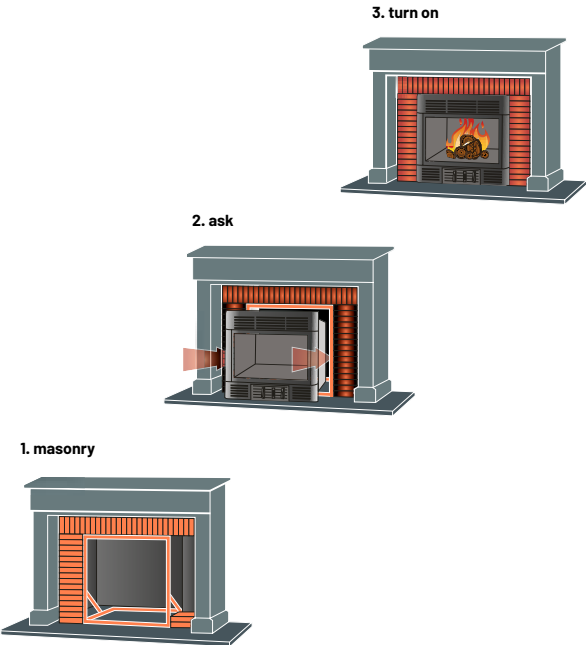
- Can be installed without a flue in an open fireplace

OPTIONS

- Protection kit for wooden beams



- 1. Pulsed hot air outlet.
- 2. Ceramic glass door with "clean glass" system.
- 3. Large capacity ashtray to space out the decendrages.
- 4. Fresh air inlet at turbine location.
- 5. The hot flue gas passes between the heat exchanger tubes and is discharged directly into the flue of your old chimney; there is no connection work to the old flue during installation.
- 6. The use of tubes for hot air circulation ensures the largest heat exchange surface and promotes better efficiency. The hot air circuit is completely independent of the combustion flue gas circuit.



VALAIS 650T  
FR9011200B  
EAN: 3760075412197



PRODUCT INFORMATION		
Model	BELLEVILLE 700C	BELLEVILLE 700CL
Standard log size	50 (55 max.)	
Warranty*	5 years	
Dimensions W x H x D (cm)	67 x 92 x 51	100 x 92 x 51
Gross weight	191 Kg	197 Kg
Net weight	164 Kg	166 Kg
PRODUCT PERFORMANCE		
Power rating	7,9 kW	
Power range	5 a 14 kW	
Performance	75%	
CO emission (13% O2)	0,09%	
Double combustion	Oui	
Ecodesign	Oui	
Green Flame	7 étoiles	
Well insulated house	Oui	

INSTALLATION AND SIZING	
Ø of flue outlet nozzle	150 mm
Flue gas connection	Dessus
Flue gas nozzle	Mâle
Ø of combustion air inlet nozzle	75 mm (raccordement dessous et arrière)
Average flue gas temperature	278 °C
Flue gas mass flow rate	38 g/s
Nozzle pressure for sizing	12 Pa
CO² emission	8,14%
Rear installation distance	30 cm
Lateral installation distance	30 cm

\* 2 years on parts and 5 years on the heating element

ESTHETICS

- Cubic design with clean, simple finishes
- **Silk-screened full glass door**
- Generous size ideal for 50 cm logs

MATERIALS

- Black heavy steel cladding (also black steel clad rear)
- Cast iron hearth plate with secondary air ramp
- Cast iron griddle (3 pieces)

COMBUSTION

The latest generation of heating elements for more efficient and cleaner combustion (minimum CO and dust content) thanks to essential factors:

- its airtightness for perfect control of combustion air (primary air, secondary air and window air fully ducted and adjustable)
- its 2 steel and stainless steel deflectors lined with vermiculite (removable without tools)
- its secondary air manifold for efficient dual combustion
- Natural heat transfer to the front of the unit for optimum comfort

USE

- Unique air control for perfect combustion control
- Easily accessible ashtray
- Clean glass system

INSTALLATION

- Compatible for well insulated room
- **Box base (standard) for storing accessories or wood (50cm logs)**
- **XXL box base, 1 metre wide (700CL)**
- 4 adjustable feet to ensure perfect levelling of the unit



Richard LeDroff



BELLEVILLE 700C  
FR9011010B  
EAN: 3760075412005

BELLEVILLE 700CL  
FR9011020B  
EAN: 3760075412012





PRODUCT INFORMATION			
Model	MONTMARTRE 800C	MONTMARTRE 800P	MONTMARTRE 1000C
Standard log size	50 (60 max.)		50 (80 max.)
Warranty *(if applicable)	5 years		
Dimensions W x H x D (cm)	76 x 92 x 51		100 x 92 x 51
Gross weight	232 Kg	231 Kg	282 Kg
Net weight	205 Kg	204 Kg	251 Kg
PRODUCT PERFORMANCE			
Power rating	8,8 kW		11 kW
Power range	7 a 14 kW		
Performance	77%		78,2%
CO emission (13% O2)	0,08%		
Double combustion	Yes		
Ecodesign	Yes		
Green Flame	7 stars		
Well insulated house	Yes		

INSTALLATION ET DIMENSIONNEMENT			
Mode	MONTMARTRE 800C	MONTMARTRE 800P	MONTMARTRE 1000C
Ø of flue outlet nozzle	150 mm		180 mm
Flue gas connection	Top		
Flue gas nozzle	Male		
Ø of combustion air inlet nozzle	75 mm bottom and rear connection	75 mm (rear)	75 mm bottom connection and rear
Average flue gas temperature	328 °C		326 °C
Flue gas mass flow rate	6,91 g/s		8,35 g/s
Nozzle depression for sizing	12 Pa		
CO² emission	11,3%		11,8%
Rear installation distance	35 cm		25 cm
Lateral installation distance	25 cm		20 cm

\* 2 years on parts and 5 years on the heating element

ESTHETICS

- Cubic design with clean, simple finishes
- **Silk-screened full glass door**
  - Panoramic view of the fire for large format enjoyment
  - Generous size ideal for 50 cm logs

MATERIALS

- Black heavy steel cladding (also black steel clad rear)
- Reinforced interior, vermiculite + steel (high durability)
- Cast iron grill (3 pieces)

COMBUSTION

- The latest generation of heating elements for more efficient and cleaner combustion (minimum CO and dust content) thanks to essential factors:
  - its airtightness for perfect control of combustion air (primary air, secondary air and window air fully ducted and adjustable)
  - its 2 steel and stainless steel deflectors lined with vermiculite (removable without tools)
  - its secondary air manifold for efficient dual combustion
- Natural heat transfer to the front of the unit for optimum comfort

USE

- Unique air control for perfect combustion control
- Easily accessible ashtray
- Clean glass system

INSTALLATION

- **Compatible for well insulated room**
- **Box base for storing accessories or wood\*.**
- 4 adjustable feet to ensure perfect levelling of the unit\*.

\* Except MONTMARTRE 800P model



MONTMARTRE 800C  
FR9011040B  
EAN: 3760075412036

MONTMARTRE 800P  
FR9011050B  
EAN: 3760075412043

MONTMARTRE 1000C  
FR9011070B  
EAN: 3760075412067



THICK STEEL FINISH

INTERNAL REINFORCEMENT

Richard LeDroff





ESTHETICS

- Cubic design with clean, simple finishes
- **Screen-printed glass door**
- Generous size ideal for 50 cm logs

MATERIALS

- Black heavy steel cladding (also black steel clad rear)
- Cast iron hearth plate with secondary air ramp
- Cast iron griddle (3 pieces)
- Wall mounting plate in thick steel (3 mm)
- Integrated mounting hooks on the back of the unit made of heavy gauge steel (6mm)

COMBUSTION

- The latest generation of heating elements for more efficient and cleaner combustion (minimum CO and dust content) thanks to essential factors:
  - its airtightness for perfect control of combustion air (primary air, secondary air and window air fully ducted and adjustable)
  - its 2 steel and stainless steel deflectors lined with vermiculite (removable without tools)
  - its secondary air manifold for efficient dual combustion
- Natural heat transfer to the front of the unit for optimum comfort

USE

- **Unique air control for perfect combustion control**
- Easily accessible ashtray
- Clean glass system

INSTALLATION

- The choice and installation of fixings depends on the nature of the wall and is the responsibility of the installer
- The wall must support the weight of the appliance (including connecting pipes and wood load)

PRODUCT INFORMATION		
Model	LE MARAIS MURAL 700	SAINT GERMAIN MURAL 800
Standard log size	50 (55 max.)	50 (60 max.)
5-year warranty	5 years	
Dimensions W x H x D (cm)	67 x 56 x 51	76 x 56 x 51
Gross weight	143 Kg	187 Kg
Net weight	119 Kg	162 Kg
PRODUCT PERFORMANCE		
Rated power	7,9 kW	8,8 kW
Power range	5 to 14 kW	7 to 14 kW
Performance	75%	77%
CO emission (13% O2)	0,09%	0,08%
Double combustion	Yes	
Ecodesign	Yes	
Green Flame	7 stars	
Well insulated house	Yes	

\* 2 years on parts and 5 years on the heating element

INSTALLATION AND SIZING		
Model	LE MARAIS MURAL 700	SAINT GERMAIN MURAL 800
Ø of flue outlet nozzle	150 mm	
Flue gas connection	Top	
Flue gas nozzle	Male	
Ø of combustion air inlet nozzle	75 mm (rear)	
Average flue gas temperature	278 °C	328 °C
Mass flow rate of fumes	38 g/s	6,91 g/s
Nozzle depression for sizing	12 Pa	
CO² emission	8,14%	11,3%
Rear installation distance	0 cm	
Lateral installation distance	30 cm	35 cm



LE MARAIS MURAL 700  
FR9011030B  
EAN: 3760075412029

SAINT GERMAIN MURAL 800  
FR9011060B  
EAN: 3760075412050



INSIDE THE MARSH 700

INTERIOR SAINTGERMAIN 800

Richard LeDroff



PRODUCT INFORMATION	
Standard log size	33 (50 max.)
Warranty* (if applicable)	5 years
Dimensions W x H x D (cm)	49 x 134,5 x 49
Gross weight	160 Kg
Net weight	135 Kg
PRODUCT PERFORMANCE	
Power rating	6 kW
Power range	3 a 10 Kw
Performance	80%
CO emission (13% O2)	0,07%
Double combustion	Yes
Ecodesign	Yes
Flamme Verte	7 stars
Well insulated house	Yes

INSTALLATION AND SIZING	
Ø of flue outlet nozzle	150 mm
Flue gas connection	Rear or top
Flue gas nozzle	Male
Ø of combustion air inlet nozzle	75 mm (root ording bottom and back)
Average flue gas temperature	309 °C
Flue gas mass flow rate	4,5 g/s
Nozzle pressure for sizing	12 Pa
CO² emission	12,3%
Rear installation distance	10 cm
Lateral installation distance	30 cm

\* 2 years on parts and 5 years on the heating element

ESTHETICS

- Sleek and elegant design with a **full glass door**
- An unparalleled view of the fire thanks to a 180° glass front and a height of 1.35 m
- Large view of the fire (73 cm diagonal)

MATERIALS

- Black heavy steel cladding
- High density vermiculite interior for better resistance to extreme temperatures and better combustion
- Cast iron grill

COMBUSTION

- The latest generation heating element for clean and more economical om-bustion thanks to :
  - **TOTAL CONTROL technology:** the two air controls allow full control of the grille and post air controls
  - **Its high level of airtightness** to control combustion air (primary, secondary and window air fully ducted and adjustable)
  - With 2 deflectors that can be removed without tools
  - With a secondary air manifold for efficient dual combustion

USE

- **Ergonomic handling thanks to its large, cold, two-point handle ensuring that the door closes properly and is watertight**
- Easily accessible ashtray
- Clean glass system

INSTALLATION

- **Compatible for well insulated room**



TOTAL CONTROL TECHNOLOGY

ERGONOMIC HANDLE

Richard LeDroff



ISERE  
FR9011080B  
EAN: 3760075412074





PRODUCT INFORMATION	
Standard log size	33 (50 max.)
Warranty* (if applicable)	5 years
Dimensions W x H x D (cm)	56 x 137,5 x 55
Gross weight	194 Kg
Net weight	168 Kg
PRODUCT PERFORMANCE	
Power rating	9,2 kW
Power range	6 a 14 kW
Performance	82 %
CO emission (13% O2)	0,07 %
Double combustion	Yes
Ecodesign	Yes
Green Flame	7 stars
Well insulated house	Yes

INSTALLATION ET DIMENSIONNEMENT	
Ø of flue outlet nozzle	150 mm
Flue gas connection	Rear or top
Flue gas nozzle	Male
Ø of combustion air inlet nozzle	95 mm (bottom and rear connection)
Average flue gas temperature	260 °C
Flue gas mass flow rate	27 g/s
Nozzle pressure for sizing	12 Pa
CO² emission	11,5 %
Rear installation distance	25 cm
Lateral installation distance	50 cm

\* 2 years on parts and 5 years on the heating element

ESTHETICS

- Sleek and elegant design with a full glass door
- **An unparalleled** view of the fire thanks to a 180° glass front and a height of 1.38 m
- Large view of the fire (78 cm diagonal)

MATERIALS

- Black heavy steel cladding
- Vermiculite interior for better resistance to extreme temperatures and better combustion
- Cast iron grill

COMBUSTION

- The latest generation heating element for clean and more economical combustion thanks to :
  - **TOTAL CONTROL technology:** the two air controls allow full control of the grille and post air controls
  - Its high level of airtightness, which allows combustion air to be controlled (primary air, secondary air and window air are fully ducted and adjustable)
  - Removable deflector without tools
  - With a secondary air manifold for efficient dual combustion

USE

- **Ergonomic handling thanks to its large, cold, two-point handle ensuring that the door closes properly and is watertight**
- Easily accessible ashtray
- Clean glass system

INSTALLATION

- **Compatible for well insulated room**



Richard LeDroff



MARGUERITE  
FR9011230B  
EAN: 3760075412227





ESTHETICS

- Modern, sleek and elegant design with a full glass door
- **Vision of the exceptional flame**

MATERIALS

- Steel cladding available in two colours:
  - White and black
- Double door (outer glass and inner cast iron)
- Steel sides for longer life
- Refractory stainless steel burner

COMBUSTION

- **AGS** (Guaranteed Safe Ignition)
  - The technology specially developed for waterproof stoves, ensuring safe ignition regardless of atmospheric conditions, installation conditions and usage.
  - The system is designed to be simple, operating without electricity, based on the compartmentalisation of the burner, delimiting an ignition zone with a specific and independent air supply.
- **ECO-STOP** which allows the appliance to be paused when the temperature of the setpoint is reached, to reduce the consumption of pellets.
- **Automatic temperature control** to maintain an even temperature for greater comfort.
- **Silent mode ventilation** can be switched off

USE

- **20 Kg tank capacity** to reduce the frequency of pellet refilling.
- Quick maintenance to save time.
- **Large capacity ashtray**
- Infrared remote control
- **Regulation :**
  - Automatic mode: automatic regulation according to the required room temperature
  - Manual mode: choice of combustion power
- **Time programming:** up to 6 time slots per day with choice of temperature setpoint for each slot
- **Standard ventilation** with 5 ventilation levels: warm air is pulsed into the room

ECONOMIC

The consumption of SYBELLE pellet stoves varies between 0.63 and 1.83 kg per hour (depending on the house to be heated, the set temperature and the power used, reduced or nominal).  
With 8 hours of heating per day, the consumption is almost one 15 kg bag per day, i.e. about 2 tons of pellets for 4 months of use.  
The price of pellets varies, depending on the distributor, from 0.27 €/kg to 0.4 €/kg\*. Thus, we estimate the purchase cost of pellets for a SYBELLE stove to be between €500 and €700 per year.  
\* Prices generally observed in 2021 and in France

PRODUCT INFORMATION	
Warranty* (if applicable)	5 ans
Dimensions W x H x D (cm)	53,4 x 105,9 x 55
Gross weight	110 Kg
Net weight	95 Kg
PERFORMANCES DE PRODUIT	
Power range in auto mode	2,8 a 8 kW
Performance	91,2 % - 92 %
Tank capacity	20 Kg
Autonomy	entre 11 et 32 h
Well insulated house	Yes
Concentric flue compatibl	Yes
Hourly consumption	0,63 - 1,83 Kg/h
CO emission (13% O2))	0,0084 %
CO² emission	9,38
Dust	15 mg/m³
Green Flame	7 étoiles

\* 2 years on parts and 5 years on the heating element

INSTALLATION AND SIZING	
Adjustable feet	Yes
Ø of flue outlet nozzle	80 mm (rear)
Ø of combustion air inlet nozzle	50 mm (rear)
Average flue gas temperature	127 °C
Flue gas mass flow rate	6,4 g/s
Power supply	230 V ~ 50Hz 120W (460W)
Average power consumption	120W
Rear/side installation distance	30 cm / 30 cm
Lateral installation distance	50 cm

INSTALLATION

POÊLE ÉTANCHE ET CSTB

- **Concentric installation**
  - new house RT2012 (RE 2020): zone 1 and 2
  - renovation: zone 1-2-3
- **Single duct installation**
  - new house RT2012 (RE 2020): zone 1 and 2
  - renovation: zone 1 and 2



SYBELLE 8kW  
BLANC  
FR9011260B  
EAN: 3760075412258



SYBELLE 8kW  
NOIR  
FR9011270B  
EAN: 3760075412265



DOUBLE DOOR

ERGONOMIC HANDLE



ESTHETICS

- **Modern, clean design: curved glass trim**
- Vision of the exceptional flame

MATERIALS

- **Glass cover** available in two colours:
  - White and black
- Double door (outer glass and inner cast iron)
- Refractory stainless steel burner

COMBUSTION

- **AGS** (Guaranteed Safe Ignition)
  - The technology specially developed for waterproof stoves, ensuring safe ignition regardless of atmospheric conditions, installation conditions and usage.
  - The system is designed to be simple, operating without electricity, based on the compartmentalisation of the burner, delimiting an ignition zone with a specific and independent air supply.
- **ECO-STOP** which allows the appliance to be paused when the temperature of the setpoint is reached, to reduce the consumption of pellets.
- **Automatic temperature control** to maintain an even temperature for greater comfort.
- **Silent mode** ventilation can be switched off

USE

- **20 Kg tank capacity** to reduce the frequency of pellet refilling.
- Quick maintenance to save time.
- **Large capacity ashtray**
- Infrared remote control
- **Regulation :**
  - Automatic mode: automatic regulation according to the required room temperature
  - Manual mode: choice of combustion power
- **Time programming:** up to 6 time slots per day with choice of temperature setpoint for each slot
- **Standard ventilation** with 5 ventilation levels: warm air is pulsed into the room

ECONOMIC

The consumption of CASTILLON pellet stoves varies between 0.63 and 1.83 kg per hour (depending on the house to be heated, the set temperature and the power used, whether reduced or nominal). With 8 hours of heating per day, the consumption is almost one 15 kg bag per day, i.e. about 2 tons of pellets for 4 months of use.

The price of pellets varies, depending on the distributor, from 0.27 €/kg to 0.4 €/kg\*. Thus, we estimate the cost of purchasing pellets for a CASTILLON stove to be between 500 and 700 € per year.

\* Typical prices in 2021 and in France

PRODUCT INFORMATION	
Warranty* (if applicable)	5 years
Dimensions W x H x D (cm)	53,2 x 106,2 x 54,6
Gross weight	110 Kg
Net weight	95 Kg
PERFORMANCES DE PRODUIT	
Power range in auto mode	2,8 a 8 kW
Performance	91,2%-92%
Tank capacity	20 Kg
Autonomy	entre 11 et 32 h
Well insulated house	Yes
Concentric flue compatibl	Yes
Hourly consumption	0,63 - 1,83 Kg/h
CO emission (13% O2))	0,0084 %
CO² emission	9,38
Dust	15 mg/m³
Green Flame	7 étoiles

\* 2 years on parts and 5 years on the heating element

INSTALLATION ET DIMENSIONNEMENT	
Adjustable feet	Yes
Ø of flue outlet nozzle	80 mm (rear)
Ø of combustion air inlet nozzle	50 mm (rear)
Average flue gas temperature	127 °C
Flue gas mass flow rate	6,4 g/s
Power supply	230 V ~ 50Hz 120W (460W)
Average power consumption	120W
Rear/side installation distance	30 cm / 30 cm
Lateral installation distance	50 cm

INSTALLATION

SEALED STOVE AND CSTB

- **Concentric installation**
  - new house RT2012 (RE 2020): zone 1 and 2
  - renovation: zone 1-2-3
- **Single duct installation**
  - new house RT2012 (RE 2020): zone 1 and 2
  - renovation: zone 1 and 2



CASTILLON 8kW  
BLANC  
FR9011280B  
EAN: 3760075412272



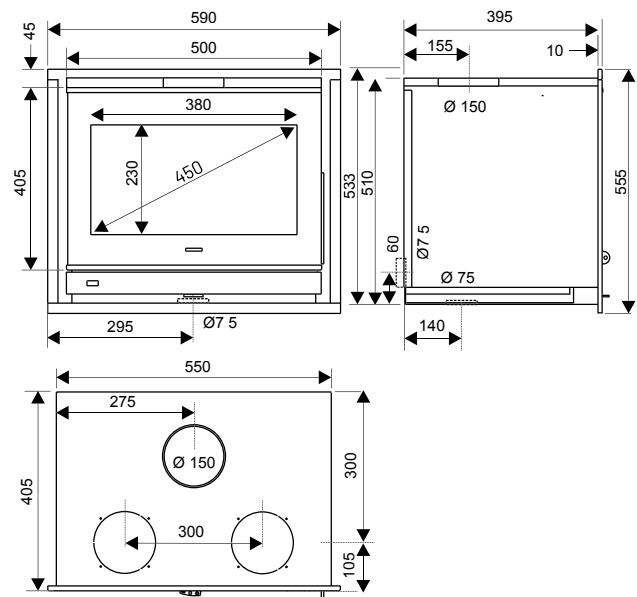
CASTILLON 8kW  
NOIR  
FR9011290B  
EAN: 3760075412289



# DIMENSIONAL DRAWINGS

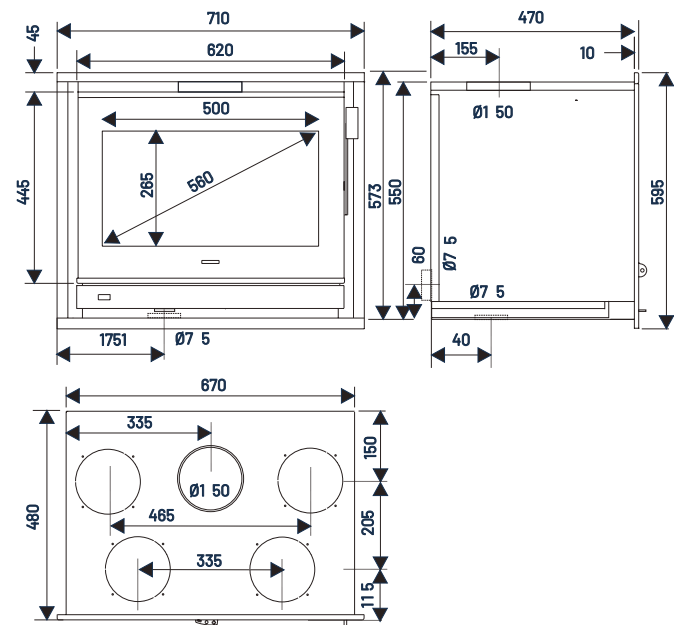
**HONORÉ 600**  
PAG. 16-17

59 x 55,5 x 40,5 cm



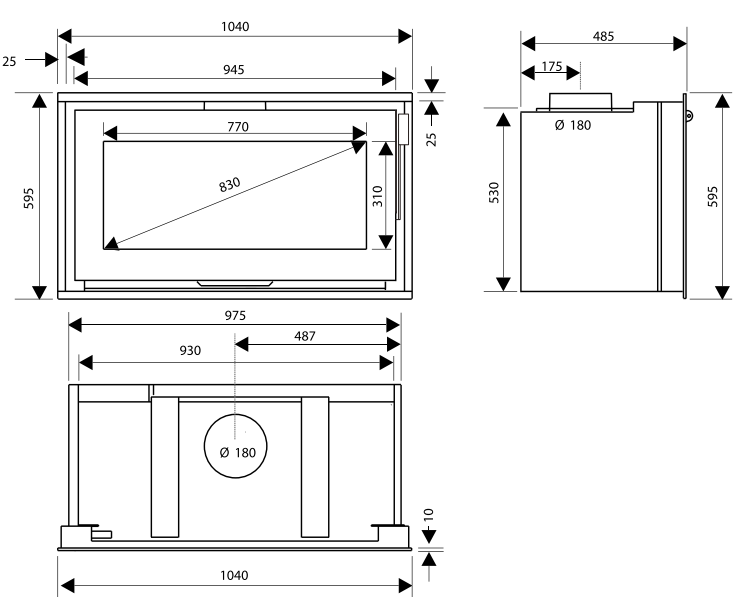
**HONORÉ 700**  
PAG. 16-17

71 x 59,5 x 48 cm



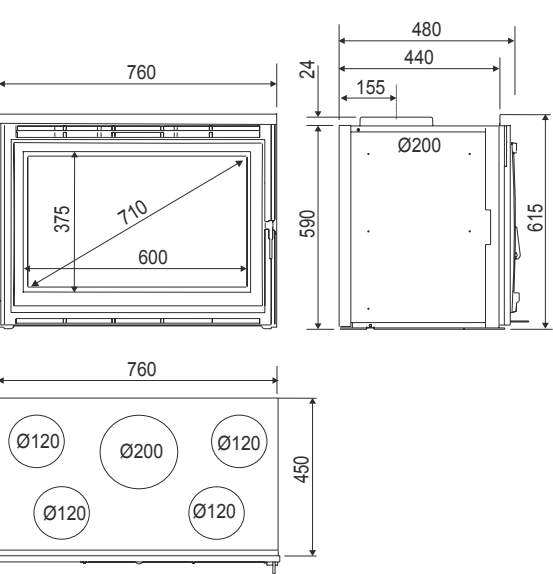
**HONORÉ 1000**  
PAG. 20-21

104 x 59,5 x 48 cm



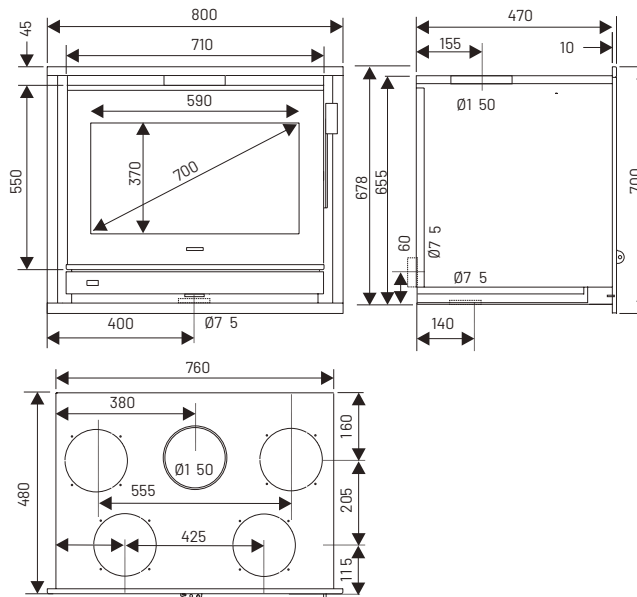
**CLOVIS 800**  
PAG. 22-23

76 x 61,5 x 48 cm



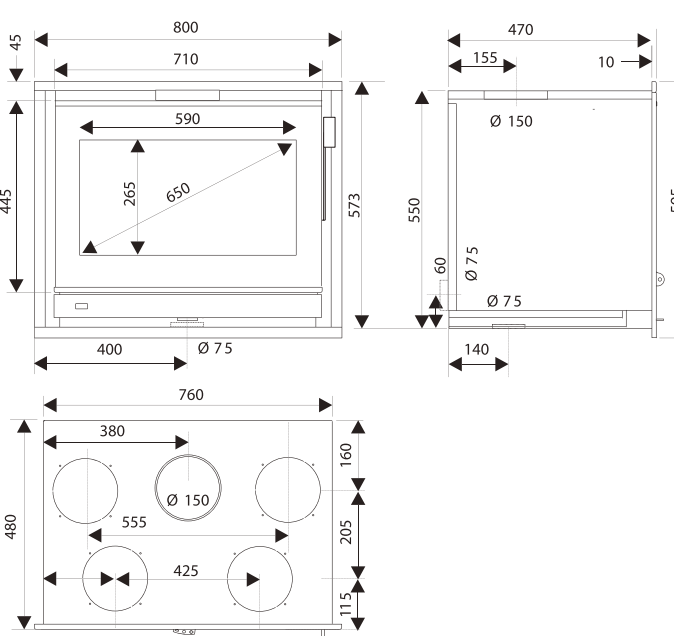
**HONORÉ 800**  
PAG. 18-19

80 x 70 x 48 cm



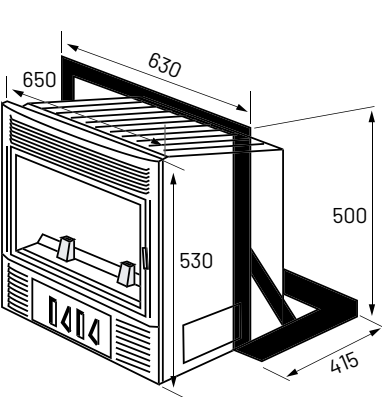
**HONORÉ 800 HORIZON**  
PAG. 18-19

80 x 59,5 x 48 cm



**VALAIS 650T**  
PAG. 24-25

65 x 53 x 41,5 cm

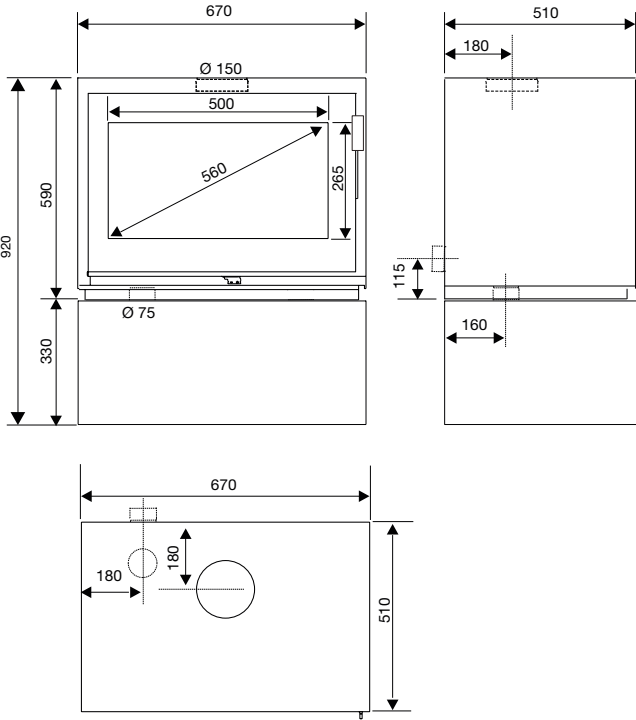




# DIMENSIONAL DRAWINGS

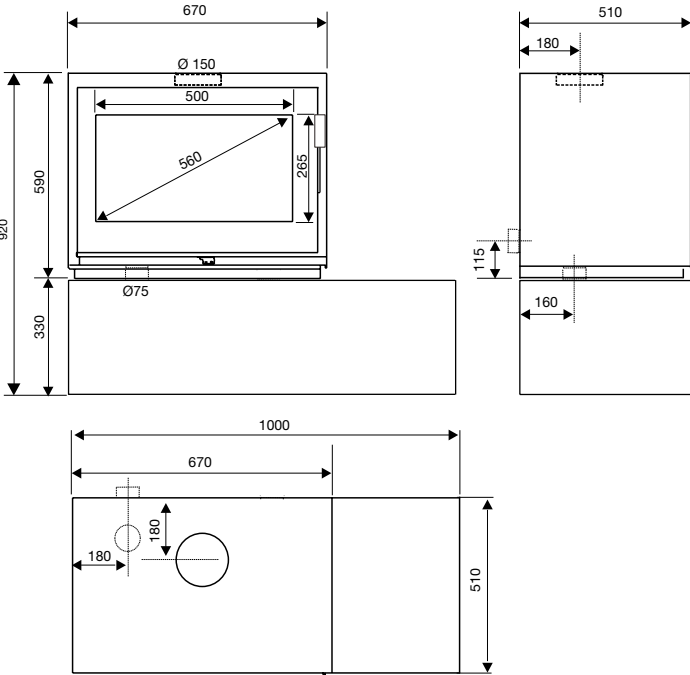
**BELLEVILLE 700C**  
PAG. 26-27

67 x 92 x 51 cm



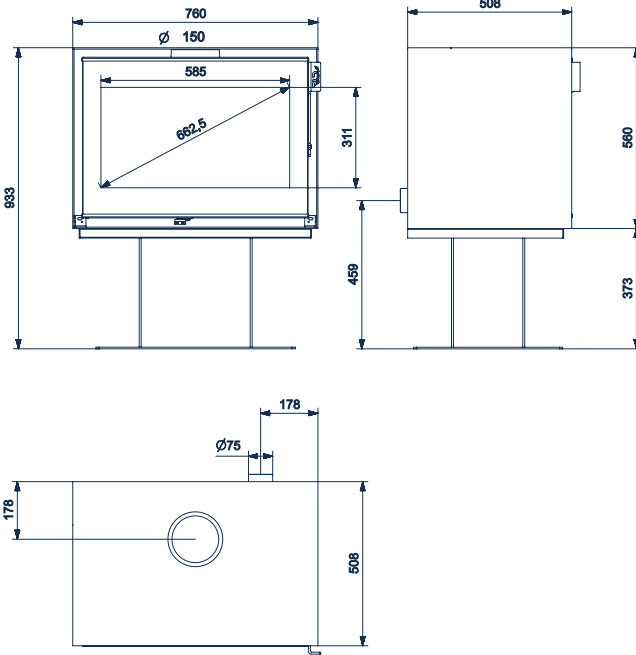
**BELLEVILLE 700CL**  
PAG. 26-27

100 x 92 x 51 cm



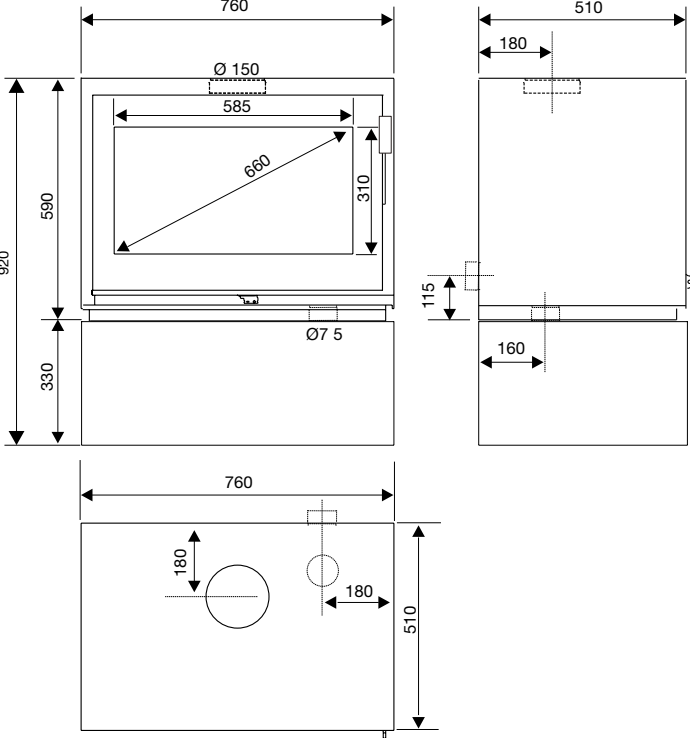
**MONTMARTRE 800P**  
PAG. 28-29

76 x 93 x 51 cm



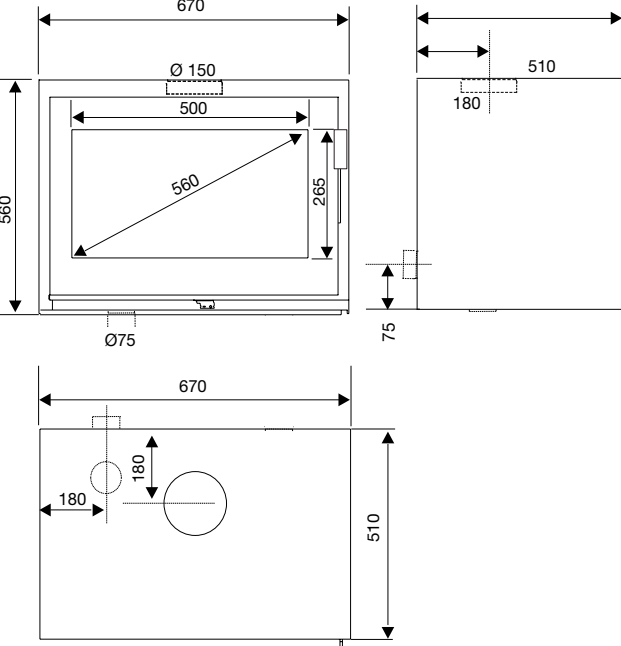
**MONTMARTRE 800C**  
PAG. 28-29

76 x 92 x 51 cm



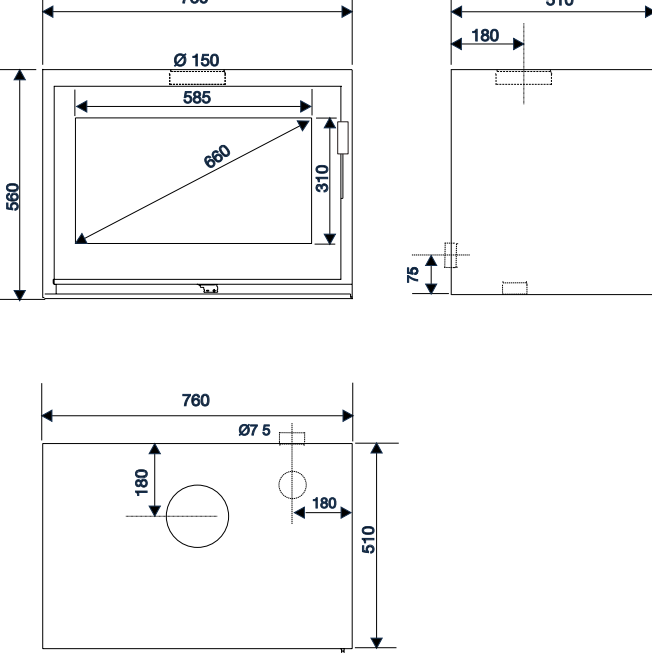
**LE MARAIS MURAL 700**  
PAG. 30-31

67 x 56 x 51 cm



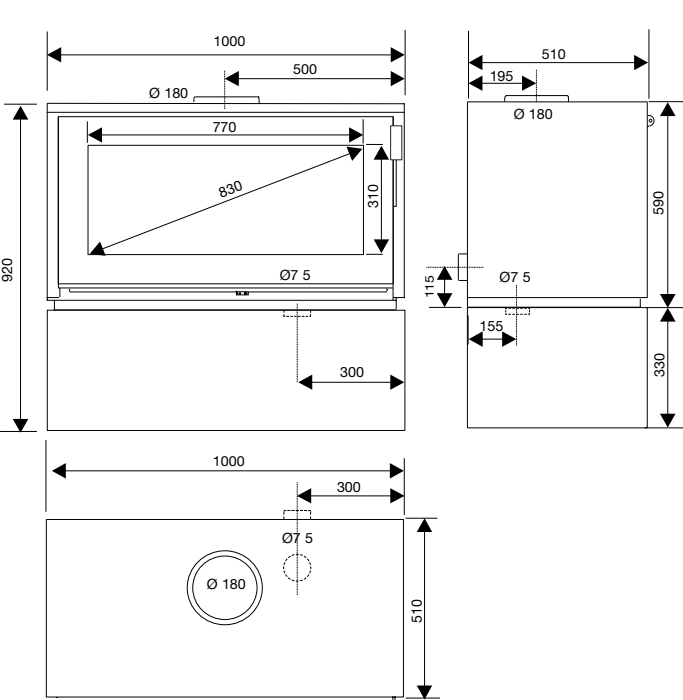
**SAINT GERMAIN MURAL**  
PAG. 30-31

76 x 56 x 51 cm



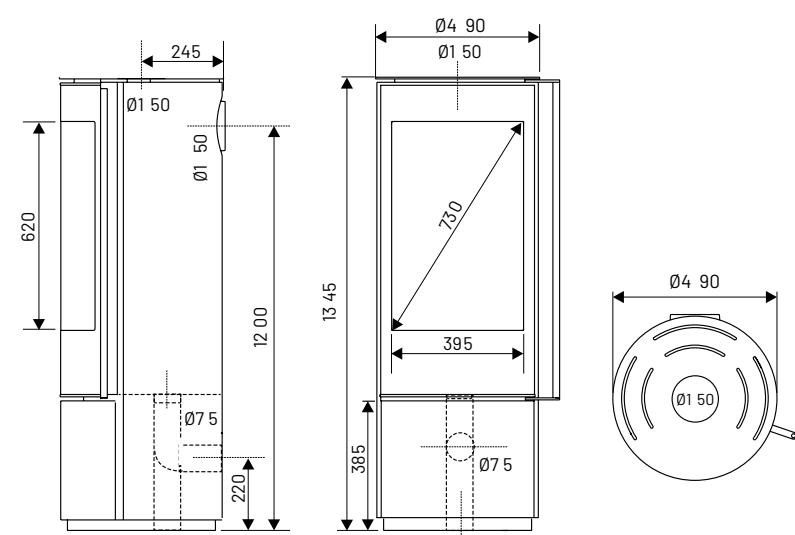
**MONTMARTRE 1000C**  
PAG. 28-29

100 x 92 x 51 cm

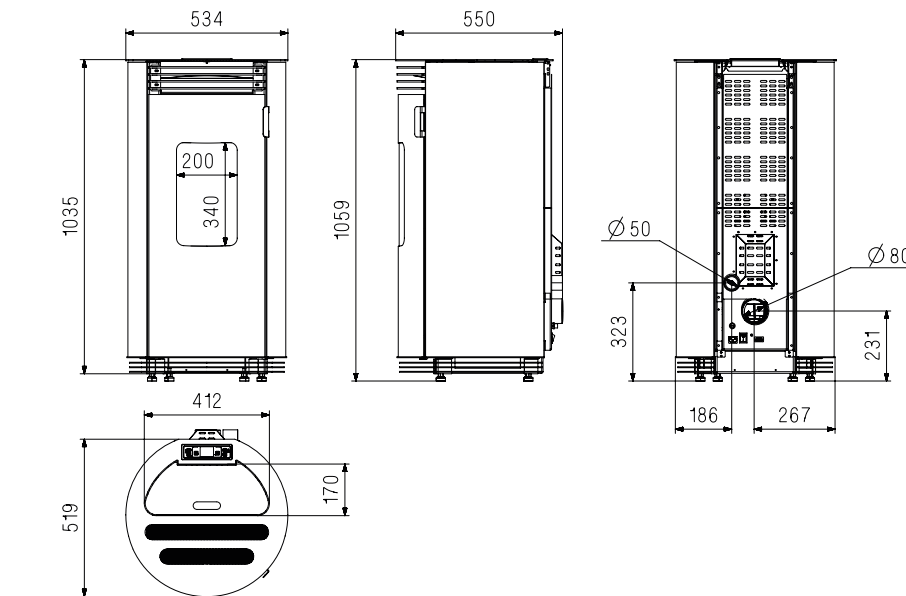


# DIMENSIONAL DRAWINGS

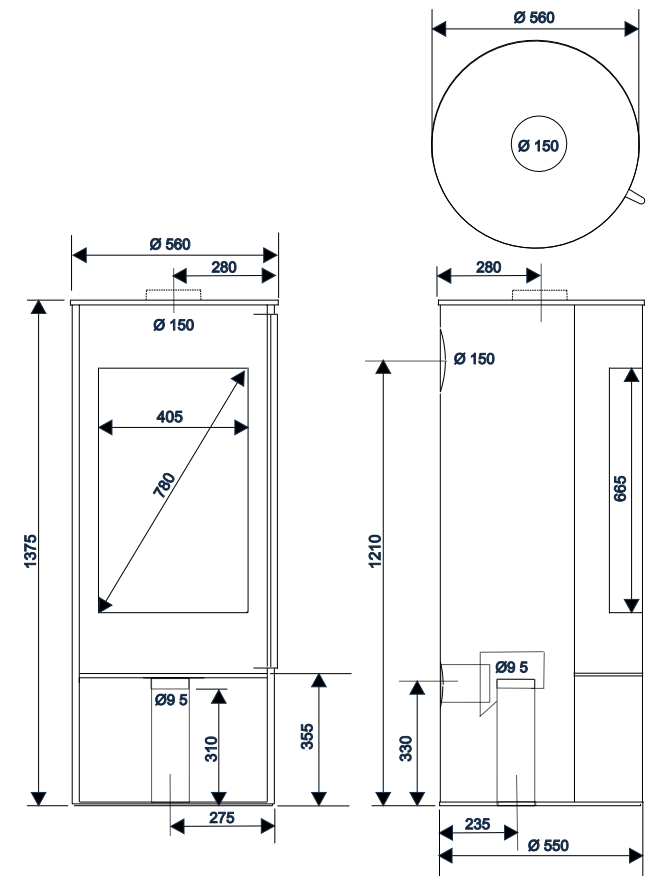
**ISERE**  
PAG. 32-33  
49 x 134,5 x 49 cm



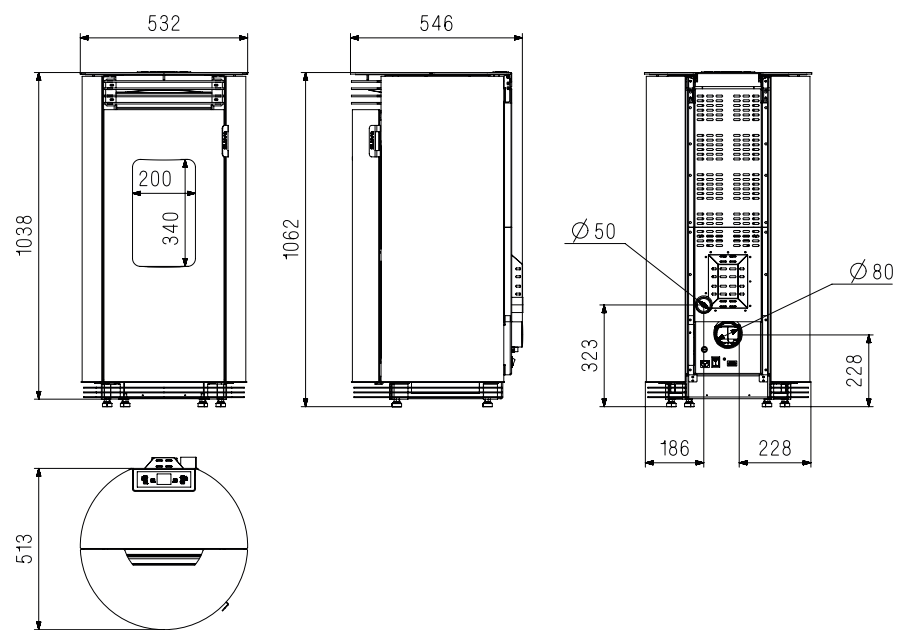
**SYBELLE 8kW**  
**BLANC / NOIR**  
PAG. 36-37  
53,4 x 103,5 x 55 cm



**MARGUERITE**  
PAG. 34-35  
56 x 137,5 x 56 cm



**CASTILLON 8kW**  
**BLANC / NOIR**  
PAG. 38-39  
53,2 x 103,8 x 54,6 cm







HONORÉ 600



HONORÉ 700



HONORÉ 800



HONORÉ 800 HORIZON

Code ref.	541208	541209	541210	541211
Product code	FR90111090B	FR9011100B	FR9011110B	FR9011120B
EAN code	3760075412081	3760075412098	3760075412104	3760075412111
ECODESIGN	Yes	Yes	Yes	Yes
Green Flame	7 stars	7 stars	7 stars	7 stars
Nominal thermal power (kW)	6	8	10,6	10
Power range	3 a 10 Kw	5 a 14 kW	7 a 14 kW	7 a 14 kW
Electrical power (W)	20	20	20	20
Standard log size (cm)	33 (43 max.)	50 (55 max.)	50 (60 max.)	50 (60 max.)
Dimensions W x H x D (cm)	59x55,5x40,5 cm	71x59,5x48 cm	80x70x48 cm	80x59,5x48 cm
Gross weight	99 kg	122 kg	147 kg	136 kg
Net weight	88 kg	99 kg	121,5 kg	110,5 kg
Ø of flue outlet nozzle	150 mm	150 mm	150 mm	150 mm
Flue gas connection	Top	Top	Top	Top
Flue gas nozzle	Male	Male	Male	Male
Suitable for well-insulated room	75 mm (bottom and rear)	75 mm (bottom and rear)	75 mm (bottom and rear)	75 mm (bottom and rear)
BBC / RT 2012	Yes	Yes	Yes	Yes
CO 13% O <sub>2</sub> (%)	0,09	0,09	0,09	0,09
CO 13% O <sub>2</sub> (mg/Nm <sup>3</sup> )	NPD	1170	NPD	NPD
Nominal yield (%)	75	85	76,7	78
Dust (mg/Nm <sup>3</sup> )	50	5	36,55	40
COV (OGC)(mg/Nm <sup>3</sup> )	48,45	120	55,4	52
NOX (mg/Nm <sup>3</sup> )	103,5	110	53,9	53,9
Average flue gas temperature at nominal speed (°C)	219	174	326	326
Flue gas mass flow rate (g/s)	4,7	6,8	8,75	8
CO <sub>2</sub> content in flue gas (%)	11,6	9,1	10,43	11
Safety distance (Rear/side/front)	40 / 40 / 1100	50 / 50 / 1300	50 / 50 / 1300	20/20/500
Required nozzle draft (Pa)	12 Pa	12 Pa	12 Pa	12 Pa
Family Standard	EN-13229	EN-13229	EN-13229	EN-13229
Fan option ( 1 )	FR9008530B	FR9005880B	FR9005880B	FR9005880B
Option 4 nozzles Ø125mm ( 2 )	FR9005680B	FR9005680B	FR9005680B	FR9005680B
Option 2 nozzles Ø150mm ( 2 )	-	FR9005670B	FR9005670B	FR9005670B
Base option ( 3 )	FR9007270B	FR9007280B	FR9007300B	FR9007300B
Protective casing ( 4 )	-	-	-	-
Optional beam protection kit ( 5 )	FR9005800B	FR9005800B	FR9005800B	FR9005800B



HONORÉ 1000



CLOVIS 800



VALAIS 650T

541214	541216	541219
FR9011150B	FR9011170B	FR9011200B
3760075412142	3760075412166	3760075412197
Yes	Yes	Yes
7 stars	7 stars	7 stars
10	9,5	6
7 to 14 kW	7 to 14 kW	3 to 10 kW
20	20	20
50 (80 max.)	50 (60 max.)	45 (50 max.)
104x59,5x48 cm	76x61,5x48 cm	65x53x41,5 cm
190 kg	142 kg	97 kg
160 kg	110 kg	78 kg
180 mm	200 mm	-
Top	Top	-
Male	Male	-
75 mm (bottom and rear)	-	-
Yes	No	No
0,08	0,104	0,103
1040	1300	1282
77	75	78
30	20	29
70	92	89
125	102	117
256	405	242
8,9	9	7,5
8,2	9,61	7,16
50 / 50 / 1300	0/500/500	0/0/2000
12 Pa	12 Pa	12 Pa
EN-13229	EN-13229	EN-13229
FR9005830B	FR9005870B	-
FR9005680B	FR9005680B	-
FR9005670B	FR9005670B	-
FR9007260B	FR9007300B	-
FR9002400B	-	-
FR9005800B	FR9005800B	FR9005800B



FAN ( 1 )



ADDITIONAL HOT AIR CHANNELLING ( 2 )



BASE ( 3 )



PROTECTIVE CASING ( 4 )



BEAM PROTECTION KIT ( 5 )

## FIREPLACE INSERTS

WOOD STOVE



BELLEVILLE 700C    BELLEVILLE 700CL    MONTMARTRE 800C    MONTMARTRE 800P    MONTMARTRE 1000C    LE MARAIS MURAL 700

Code ref.	541200	541201	541203	541204	541206	541202
Product code	FR9011010B	FR9011020B	FR9011040B	FR9011050B	FR9011070B	FR9011030B
EAN code	3760075412005	3760075412012	3760075412036	3760075412043	3760075412067	3760075412029
ECODESIGN	Yes	Yes	Yes	Yes	Yes	Yes
Green Flame	7 stars	7 stars	7 stars	7 stars	7 stars	7 stars
Nominal thermal power (kW)	7,9	7,9	8,8	8,8	11	7,9
Power range	5 to 14 kW	5 to 14 kW	7 to 14 kW	7 to 14 kW	7 to 14 kW	5 to 14 kW
Taille des bûches standard (cm)	50 (55 max.)	50 (55 max.)	50 (60 max.)	50 (60 max.)	50 (80 max.)	50 (55 max.)
Dimensions W x H x D (cm)	67x92x51 cm	100x92x51 cm	76x92x51 cm	76x92x51 cm	100x92x51 cm	67x56x51 cm
Gross weight	191 kg	197 kg	232 kg	231 kg	282 kg	143 kg
Net weight	164 kg	166 kg	205 kg	204 kg	251 kg	119 kg
Ø of flue outlet nozzle	150 mm	150 mm	150 mm	150 mm	180 mm	150 mm
Flue gas connection	Top	Top	Top	Top	Top	Top
Flue gas nozzle	Male	Male	Male	Male	Male	Male
Suitable for well-insulated room	75 mm (bottom and rear)	75 mm (bottom and rear)	75 mm (bottom and rear)	75 mm (bottom and rear)	75 mm (bottom and rear)	75 mm (bottom and rear)
BBC / RT 2012	Yes	Yes	Yes	Yes	Yes	Yes
CO 13% O2 (%)	0,09	0,09	0,08	0,08	0,08	0,09
CO 13% O2 (mg/Nm3)	1125	1125	1047	1047	977	1125
Nominal yield (%)	75	75	77,1	77,1	78,2	75
Dust (mg/Nm3)	9	9	35,2	35,2	30,1	9
COV (OGC)(mg/Nm3)	86	86	72,8	72,8	59,6	86
NOX (mg/Nm3)	93	93	96,4	96,4	101,9	93
Average flue gas temperature at nominal speed (°C)	278	278	327,9	327,9	326,3	278
Flue gas mass flow rate (g/s)	38	38	6,9	6,9	8,35	38
CO2 content in flue gas (%)	8,14	8,14	11,31	11,31	11,77	8,14
Safety distance (Rear/side/front)	300/300/1000	300/300/1000	250/350/2000	250/350/2000	250 / 200 / 800	300/300/1000
Required nozzle draft (Pa)	12 Pa	12 Pa	12 Pa	12 Pa	12 Pa	12 Pa
Family Standard	EN-13240	EN-13240	EN-13240	EN-13240	EN-13240	EN-13240



PELLET STOVES



SAINT GERMAIN MURAL 800    ISERE    MARGUERITE

541205	541207	541222
FR9011060B	FR9011080B	FR9011230B
3760075412050	3760075412074	3760075412227
Yes	Yes	Yes
7 stars	7 stars	7 stars
8,8	6	9,2
7 to 14 kW	3 to 10 Kw	6 to 14 Kw
50 (60 max.)	33 (50 max.)	33 (50 max.)
76x56x51 cm	49x134,5x49 cm	56x137,5x55 cm
187 kg	160 kg	194 kg
162 kg	135 kg	168 kg
150 mm	150 mm	150 mm
Top	Rear or top	Rear or top
Male	Male	Male
75 mm (rear connection)	75 mm (bottom and back)	75 mm (bottom and back)
Yes	Yes	Yes
0,08	0,07	0,07
1047	NPD	875
77,1	80	82
35,2	25	4
72,8	47	36
96,4	70	79
327,9	309	260
6,9	4,5	27
11,31	12,3	11,5
250/350/2000	100/300/2000	250/500/2000
12 Pa	12 Pa	12 Pa
EN-13240	EN-13240	EN-13240



SYBELLE 8kW    CASTILLON 8kW

Code ref.	541225 (B) 541226 (N)	541227 (B) 541228 (N)
Product code	FR9011260B (B) FR9011270B (N)	FR9011280B (B) FR9011290B (N)
EAN code	3760075412258 (B) 3760075412265 (N)	3760075412272 (B) 3760075412289 (N)
ECODESIGN	Yes	Yes
Green Flame	Yes	Yes
Nominal thermal power (kW)	8	8
Power range	2,8 to 8 kW	2,8 to 8 kW
Electrical power (W)	120W	120W
Power supply	230 V ~ 50Hz 120W (460W)	230 V ~ 50Hz 120W (460W)
Dimensions W x H x D (cm)	53,4x105,9x55	53,2x106,2x54,6
Gross weight	110 kg	110 kg
Net weight	95 kg	95 kg
Ø of flue outlet nozzle	80 mm	80 mm
Flue gas connection	Rear	Rear
Flue gas nozzle	Male	Male
Ø of combustion air inlet nozzle	50 mm (rear)	50 mm (rear)
CSTB	Yes	Yes
BBC / RT 2012	Yes	Yes
CO 13% O2 (%)	0,0084	0,0084
CO 13% O2 (mg/Nm3)	105	105
Nominal yield (%)	107	107
C	91,3	91,3
Efficiency at reduced speed (%)	92	92
Dust (mg/Nm3)	15	15
VOCs (OGC)(mg/Nm3)	20	20
NOX (mg/Nm3)	95	95
Average flue gas temperature at nominal speed (°C)	127	127
Flue gas mass flow rate (g/s)	6,4	6,4
CO2 content in flue gas (%)	9,38	9,38
Safety distance (Rear/side/front)	300/300/800/400	300/300/800/400
Required nozzle draught (Pa)	12	12
Family Standard	EN-14785	EN-14785



## NOTES

*Richard Le Droff*



**SUPRA FRANCE - TAURUS GROUP**

28 rue du Général Leclerc - 67210 Obernai FRANCE

Photographies non contractuelles. Les photographies, schémas et textes de ce document sont les propriétés de la société SUPRA et ne peuvent être reproduits sans son autorisation écrite.  
La société SUPRA se réserve le droit de modifier les présentations et cotes de ses modèles ainsi que les conceptions de montage si nécessaire. SUPRA FRANCE SARL au capital de 3 007 500€, 28, rue du Général Leclerc - 67212 OBERNAI Cedex - R.C.S. SAVERNE B 441 048 576 - 03/22 - RLD FRANCE

FR0600390B